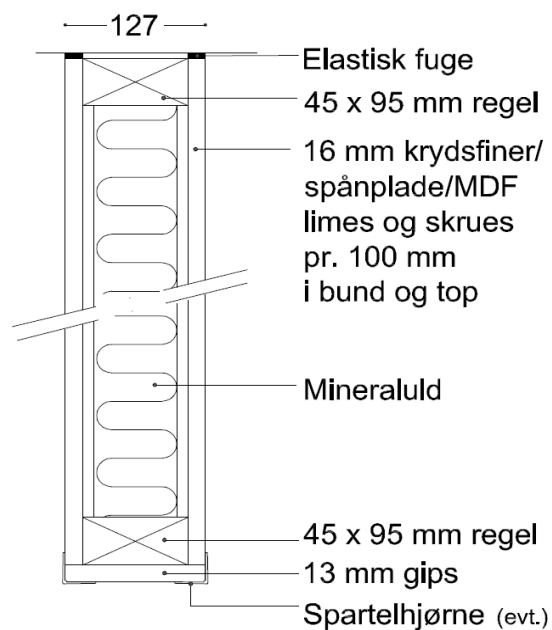


# Overvægsprincipper & ophængstyper

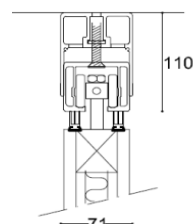
Med udgangspunkt i foldevæggens laboriemålte lydreduktion, vises her forskellige kombinationer af bærende overvægsprincipper og ophængstyper.

## 31, 37 & 41 dB konstruktion



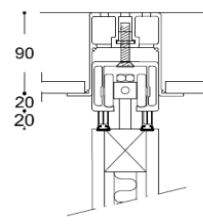
### JUSTERBAR

#### UP/TP



[PDF](#) [DWG](#)

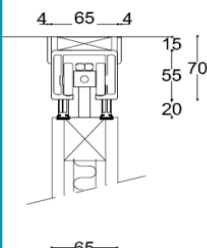
#### UPL/TP



[PDF](#) [DWG](#)

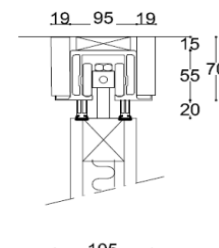
### FAST

#### TP

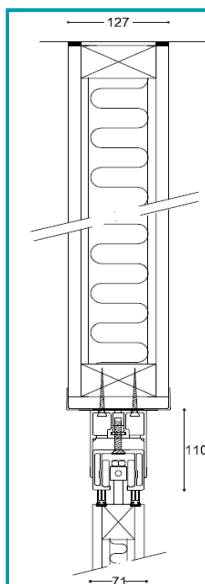


[PDF](#) [DWG](#)

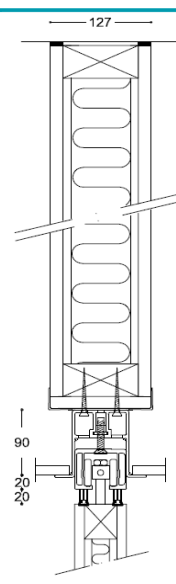
#### TPL



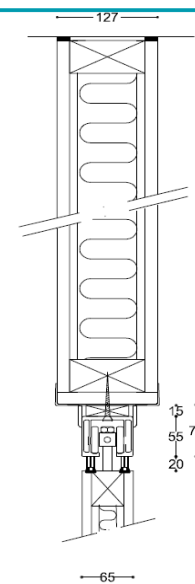
[PDF](#) [DWG](#)



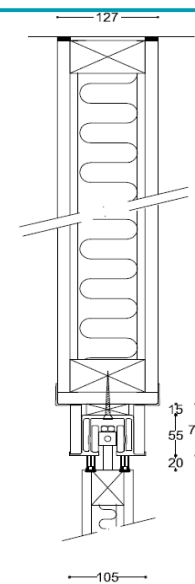
[PDF](#) [DWG](#)



[PDF](#) [DWG](#)



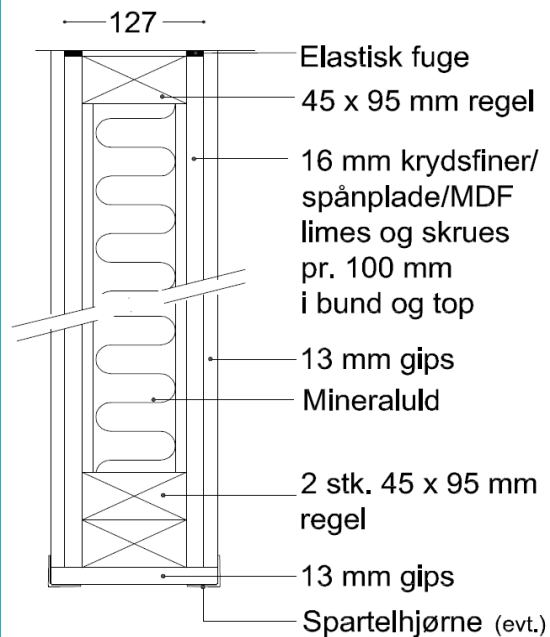
[PDF](#) [DWG](#)



[PDF](#) [DWG](#)

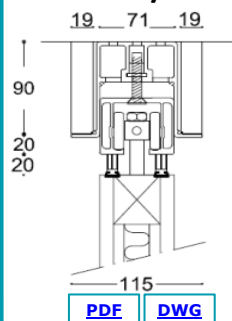
# Overvægsprincipper & ophængstyper

## 44 & 46 dB konstruktion

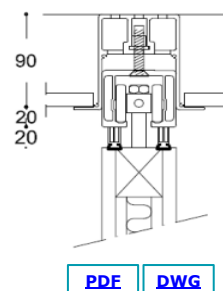


## JUSTERBAR

### UPL/TP

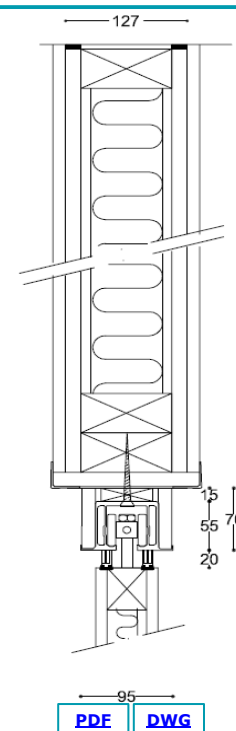
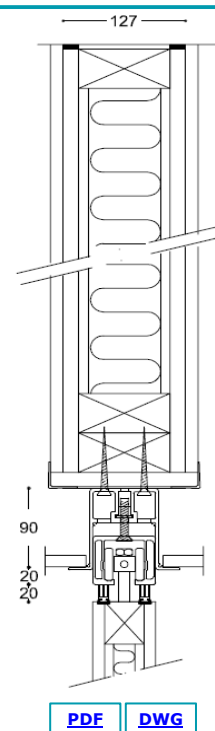
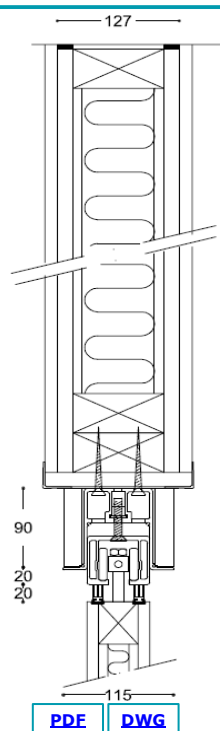
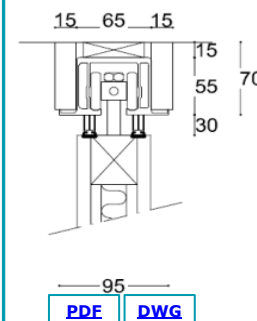


### UPL/TP



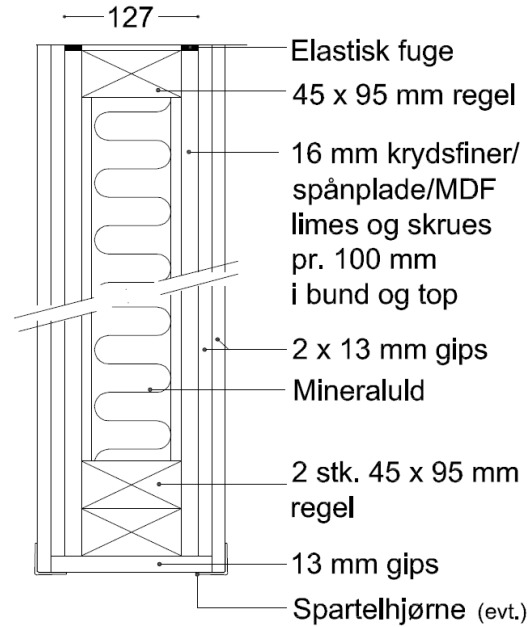
## FAST

### TPL



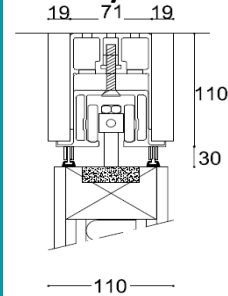
# Overvægsprincipper & ophængstyper

## 48 dB konstruktion



## JUSTERBAR

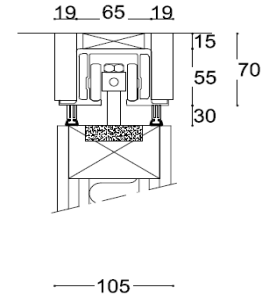
### UP/TPL



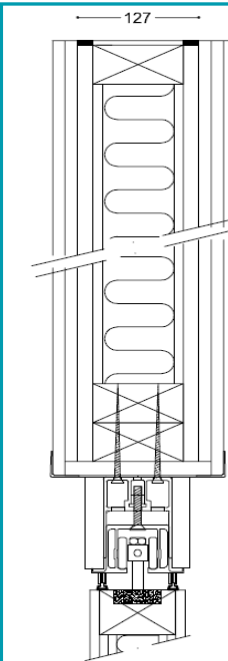
[PDF](#) [DWG](#)

## FAST

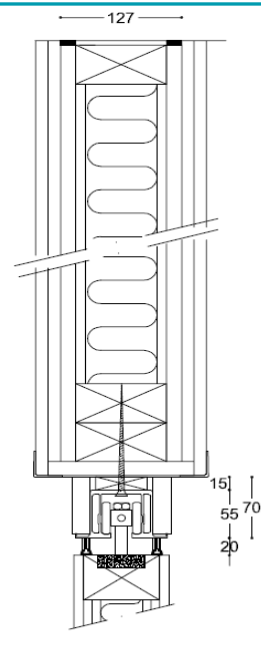
### TPL



[PDF](#) [DWG](#)



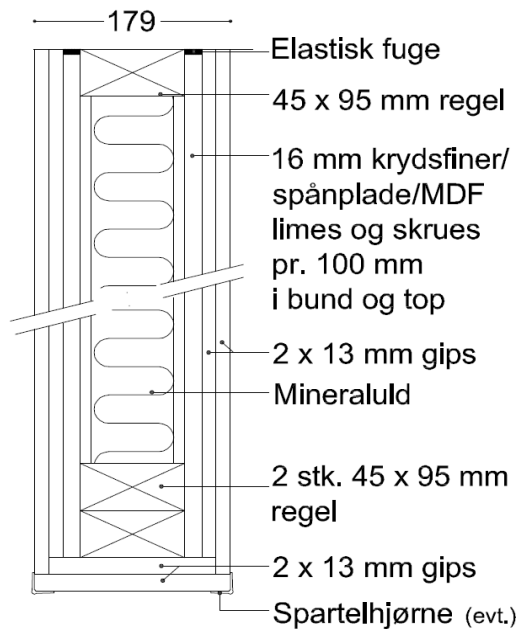
[PDF](#) [DWG](#)



[PDF](#) [DWG](#)

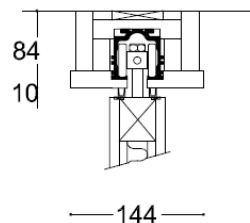
# Overvægsprincipper & ophængstyper

## BD30/60 konstruktion



## FAST

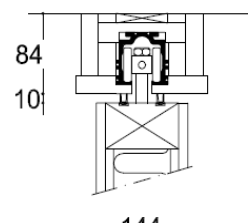
### BD30



[PDF](#)

[DWG](#)

### BD60



[PDF](#)

[DWG](#)

